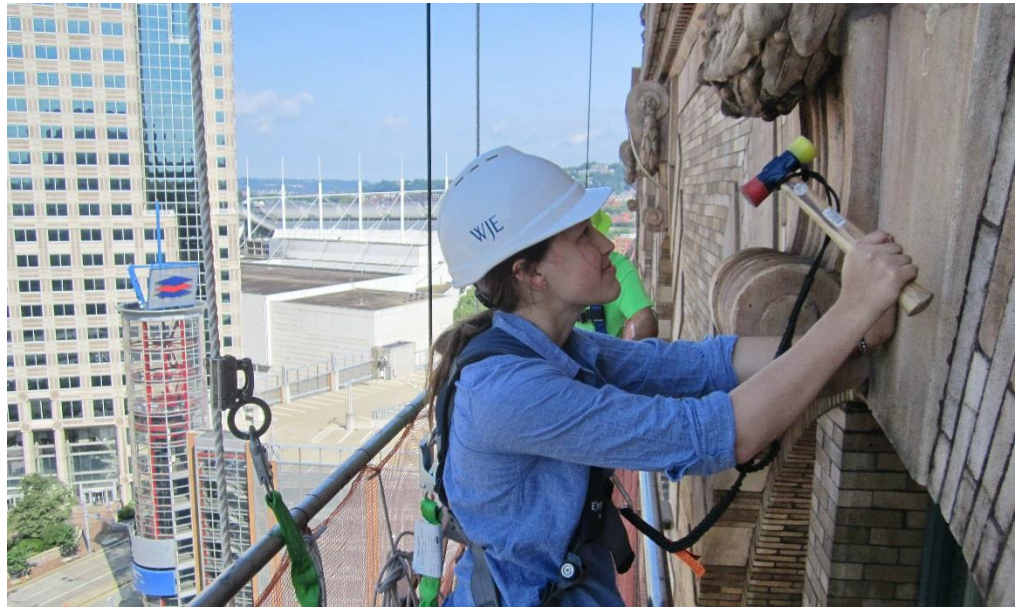




WJE PITTSBURGH

Solutions for the Built World



Founded in 1956, Wiss, Janney, Elstner Associates, Inc. (WJE), is an interdisciplinary engineering, architecture, and materials science firm specializing in delivering practical, innovative, and technically sound solutions across all areas of new and existing construction. WJE combines state-of-the-art laboratory and testing facilities, nationwide offices, and knowledge sharing systems to provide solutions for the built world.

OUR SERVICES

- Building enclosure commissioning and testing
- Building science
- Facade assessment
- Failure and disaster response
- Geotechnical and geological engineering
- Laboratory materials evaluation
- Litigation consulting
- Load testing and instrumentation
- Rehabilitation design and design-build
- Roofing and waterproofing
- Structural evaluation

OUR APPROACH

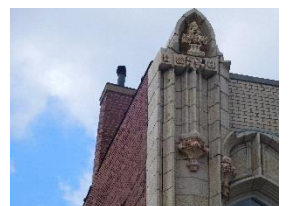
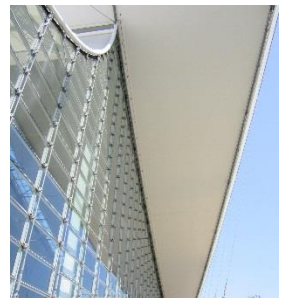
As materials, technologies, and structures change, our fundamental philosophy remains the same: developing better solutions based on an accurate diagnosis of each structure's unique problem.

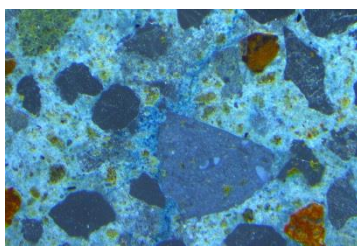
OUR PEOPLE

With five employees in Pittsburgh, offices in Cleveland and Philadelphia, and more than 800 employees worldwide, WJE has the resources to respond to virtually any problem, with expertise in all aspects of construction technology. The firm's engineers, architects, and materials scientists are supported by technicians who are experts in testing and instrumentation. WJE's understanding of structural behavior and the performance of materials is enhanced by experience gained from more than 175,000 projects worldwide.

OUR RESOURCES

Our Janney Technical Center laboratory and testing facility is one of the nation's largest privately owned construction-based testing laboratories; it enables WJE to provide reliable answers to questions about construction systems, components, and materials. Additionally, WJE's Cleveland office houses a 1,300-square-foot petrographic laboratory. No firm is more qualified to break new ground in finding practical, innovative, and technically sound solutions to problems in the built world.





PITTSBURGH REPRESENTATIVE PROJECTS

- **Liberty Avenue Bridge**
Fire Damage Investigation and Repair
Pittsburgh, PA
- **PNC Park**
Concrete Assessment and Seating Bowl
Waterproofing Repairs
Pittsburgh, PA
- **Carnegie Mellon University, Scott Hall**
Peer Review and Construction Period
Services
Pittsburgh, PA
- **David L. Lawrence Convention Center**
Roofing Evaluation and Remediation Design;
Building Enclosure Commissioning
Pittsburgh, PA
- **Providence Point**
Investigation of Slab Heaving
Mt. Lebanon, PA
- **St. Bernard Church**
Exterior Facade Wall Evaluation
Pittsburgh, PA
- **West General Robinson Street Garage**
Mitigation Option Study for Ongoing Precast
Spalls
Pittsburgh, PA
- **Cal U, Vulcan Parking Garage**
Precast Double Tee Flange Failure Evaluation
California, PA
- **UPMC, Sports Performance Complex**
Water Leakage Investigation
Pittsburgh, PA
- **Lexington Technology Center**
Engineering Services Related to Retaining
Wall and Pedestrian Ramp/Bridge
Pittsburgh, PA
- **Liberty Center**
Facade Inspection
Pittsburgh, PA
- **Omni Hotel William Penn**
Leak Investigation
Pittsburgh, PA
- **Duquesne University Energy Department**
Cooling Tower Placement Feasibility Study
Pittsburgh, PA
- **The Art Institute of Pittsburgh**
Facade Repairs
Pittsburgh, PA

WJE PITTSBURGH

800 Vinial Street
Suite B301
Pittsburgh, PA 15212
412.316.9732

