



WJE LONDON

Solutions for the Built World



Founded more than half a century ago, Wiss, Janney, Elstner (WJE) is a global firm of engineers, architects, and materials scientists committed to helping clients solve, repair, and avoid problems in the built world. Our interdisciplinary approach—supported by an in-house, state-of-the-art structural and materials science laboratory—is unique to WJE and has positioned us as a prominent forensic consulting leader in the assessment, investigation, and preservation of buildings and infrastructure around the world.

OUR SERVICES

- **Forensic Investigation**
 - Buildings
 - Infrastructure
- **Consulting Engineering**
 - Civil/Structural/Seismic
- **Building Enclosure**
 - Commissioning
 - Condition Assessment
 - Consulting Engineering
- **Applied Sciences**
 - Acoustics and Vibration
 - Building Physics
 - Materials Science
 - Metallurgy
- **Fire and Life Safety**
 - Design Review
 - Exterior Cladding and Fire Protection
 - Risk Assessment
- **Landmarks Conservation**
 - Adaptive Reuse
 - Refurbishment

OUR CULTURE

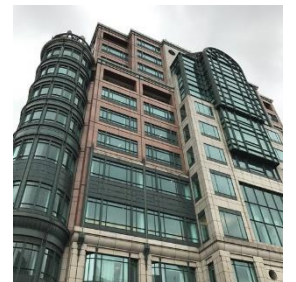
Consummate professionalism, exceptional service, and an unwavering commitment to technical excellence are at the heart of our culture. They are the values that define us and are reflected every day in the quality of our work and the character, commitment, and enthusiasm of our people.

OUR PEOPLE

With a growing presence in London and over 700 professionals worldwide, WJE is uniquely positioned to respond quickly and effectively to the challenges that we face in our built environment. From disaster response to the advancement of building physics to conservation and resiliency in our buildings and infrastructure, the intellectual curiosity of our people and their commitment to first principles are fundamental to our success.

OUR RESOURCES

From publicly funded research to private sector problem solving, our team of scientists, metallurgists, and petrographers work closely with WJE design professionals and forensic experts to deliver a collective level of technical depth and expertise unmatched among our peers.





REPRESENTATIVE PROJECTS

- **1 Finsbury Avenue**
London, United Kingdom
 Building Enclosure Consulting and Refurbishment
- **135 Bishopsgate**
London, United Kingdom
 Building Enclosure Consulting and Refurbishment
- **AccorInvest Hotels**
Global Portfolio: UK/EU, Americas, Australia, New Zealand
 Exterior Cladding and Fire Protection
- **Anfield Stadium**
Liverpool, England
 Design Peer Review for Proposed Stadium Expansion
- **Ariane Tower**
Paris, France
 Facade Assessment and Feasibility Study for Potential Overclad/Reclad
- **Baxter's Place, Edinburgh Grand, and Old Town Chambers**
London, United Kingdom
 Exterior Cladding and Fire Protection
- **Boulevard Plaza at Georg-Brauchle-Ring**
Munich, Germany
 Investigation of Building Pressurization and Ceiling Panel Disengagement
 Condition Assessment of Boulevard Plaza and Underlying Parking Structure
- **Kungshuset Marble Facade**
Stockholm, Sweden
 Field Assessment of Irregular Discontinuities, Cracking Distress, and Strength Loss
- **MetroCentre**
Gateshead, England
 Roofing System Condition Assessment
- **The Westin Paris – Vendôme**
Paris, France
 Field Assessment and Technical Support for Cleaning and Restoration of Exterior Stone Facade
- **U.S. Embassy**
London, United Kingdom
 Roofing and Waterproofing Consulting
- **Westquay Shopping Centre**
Southampton, England
 Review of Due Diligence Study of Vitreous Enamel Facade
- **Winfield House**
London, United Kingdom
 Cultural Significance Study

