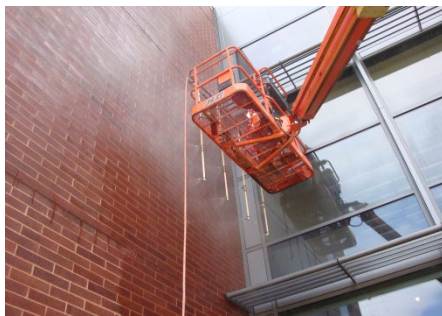




WJE CLEVELAND

Solutions for the Built World



Founded more than half a century ago, Wiss, Janney, Elstner Associates, Inc. (WJE), is an interdisciplinary engineering, architecture, and materials science firm specializing in delivering practical, innovative, and technically sound solutions across all areas of new and existing construction. WJE combines state-of-the-art laboratory and testing facilities, nationwide offices, and knowledge sharing systems to provide solutions for the built world.

OUR SERVICES

- Engineering
- Forensics
- Building enclosure commissioning and testing
- Building science
- Facade assessment
- Failure and disaster response
- Laboratory materials evaluation
- Load testing and instrumentation
- Rehabilitation design and design-build
- Roofing and waterproofing
- Structural evaluation

OUR APPROACH

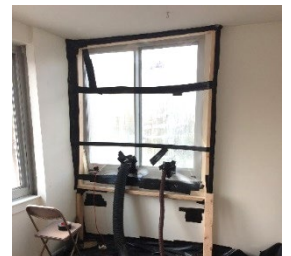
As materials, technologies, and structures change, our fundamental philosophy remains the same: developing better solutions based on an accurate diagnosis of each structure's unique problem.

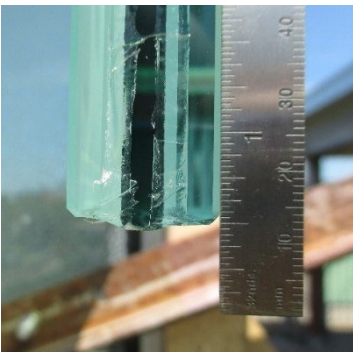
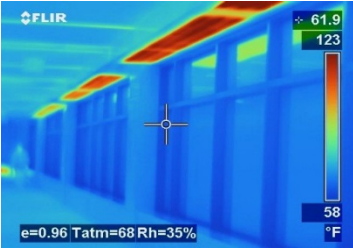
OUR PEOPLE

With more than a dozen employees in Cleveland and more than 700 employees nationwide, WJE has the resources to respond to virtually any problem, with expertise in all aspects of construction technology. The firm's engineers, architects, and materials scientists are supported by technicians who are experts in testing and instrumentation. WJE's understanding of structural behavior and the performance of materials is enhanced by experience gained from more than 125,000 projects worldwide.

OUR RESOURCES

Our Janney Technical Center laboratory and testing facility is one of the nation's largest privately owned construction-based testing laboratories; it enables WJE to provide reliable answers to questions about construction systems, components, and materials. Additionally, WJE Cleveland houses a 1,300-square-foot petrographic laboratory. No firm is more qualified to break new ground in finding practical, innovative, and technically sound solutions to problems in the built world.





CLEVELAND REPRESENTATIVE PROJECTS

- **Church of the Saviour**
Cleveland, OH
Water Infiltration Investigation and Repair Design
- **Northeast Ohio Regional Sewer District**
Cleveland, OH
Building Rehabilitation Envelope Consulting
- **Horseshoe Casino Parking Garage**
Cleveland, OH
Investigation of Collapse during Construction
- **Cleveland Museum of Art**
Cleveland, OH
Condensation Investigation
- **American Greetings Headquarters**
Westlake, OH
Building Enclosure Consulting
- **The Carlyle Condominiums**
Lakewood, OH
Window Replacement Design
- **Higbee Building**
Cleveland, OH
Property Condition Assessment
- **Little Cuyahoga River Retaining Walls**
Akron, OH
Wall Stability Investigation and Repair Design
- **Cleveland Renaissance Hotel**
Cleveland, OH
Multi-Year Facade Stabilization and Rehabilitation Program
- **PNC Center**
Cleveland, OH
Roofing Replacement, Facade Stabilization and Fall Protection Design
- **North Point Plaza**
Cleveland, OH
Waterproofing and Structural Repairs
- **Huntington Park Garage**
Cleveland, OH
Condition Assessment and Repair Consulting
- **Bulkley and Hanna Buildings at Playhouse Square**
Cleveland, OH
Facade Ordinance Inspections and Stabilization

WJE CLEVELAND

9655 Sweet Valley Drive
Suite 3
Cleveland, OH 44125
216.642.2300

