



WJE HONOLULU

# Solutions for the Built World



Founded more than half a century ago, Wiss, Janney, Elstner Associates, Inc. (WJE), is an interdisciplinary engineering, architecture, and materials science firm specializing in delivering practical, innovative, and technically sound solutions across all areas of new and existing construction. WJE combines state-of-the-art laboratory and testing facilities, nationwide offices, and knowledge sharing systems to provide solutions for the built world.

## OUR SERVICES

- Structural engineering
- Architecture and architectural engineering
- Materials science
- Testing
- Design
- Geotechnical and geological engineering
- Litigation consulting

## OUR APPROACH

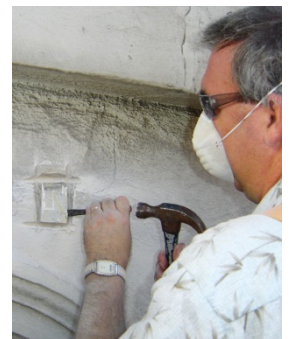
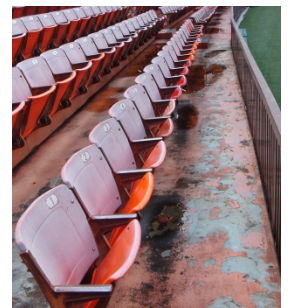
As materials, technologies, and structures change, our fundamental philosophy remains the same: developing better solutions based on an accurate diagnosis of each structure's unique problem.

## OUR PEOPLE

With ten employees in Honolulu and more than 600 employees nationwide, WJE has the resources to respond to virtually any problem, with expertise in all aspects of construction technology. The firm's engineers, architects, and materials scientists are supported by technicians who are experts in testing and instrumentation. WJE's understanding of structural behavior and the performance of materials is enhanced by experience gained from more than 125,000 projects worldwide.

## OUR RESOURCES

Our Janney Technical Center laboratory and testing facility is one of the nation's largest privately owned construction-based testing laboratories; it enables WJE to provide reliable answers to questions about construction systems, components, and materials. No firm is more qualified to break new ground in finding practical, innovative, and technically sound solutions.



**HONOLULU REPRESENTATIVE PROJECTS**



- **Hawaii State Capitol Building**  
Honolulu, HI  
Roof Replacement
- **One Ala Moana**  
Honolulu, HI  
Roofing and Waterproofing Design
- **Prince Jonah Kuhio Kalaniana'ole (Federal Building)**  
Waikiki, Oahu, HI  
Concrete Repair Consulting
- **Interstate Highway H2/H3 and Oahu Bridge Structures**  
Oahu, HI  
Bridge Evaluations
- **Reed's Island Bridge**  
Hilo, HI  
Technical Design Services
- **Halekulani Hotel**  
Waikiki, Oahu, HI  
Roofing and Waterproofing Design/Construction Consulting
- **Wilcox Memorial Hospital**  
Lihue, Kauai, HI  
Exterior Building Envelope Investigation and Design
- **Big Island Bridges**  
Big Island, HI  
Condition Assessment and Structural Analysis
- **Aloha Stadium**  
Honolulu, HI  
Phase I & II, High Roof Replacement, Structural and Coating Design, and Peer Review
- **Andersen Air Force Base**  
Andersen Air Force Base, Guam  
Water Tank Roof Collapse Investigation
- **K3-K5 Decks at Pearl Harbor**  
Oahu, HI  
Assessment of Pier Deck Delamination

**WJE HONOLULU**

Ala Moana Building  
1441 Kapiolani Boulevard  
Suite 1700  
Honolulu, HI 96814  
808.591.2728

