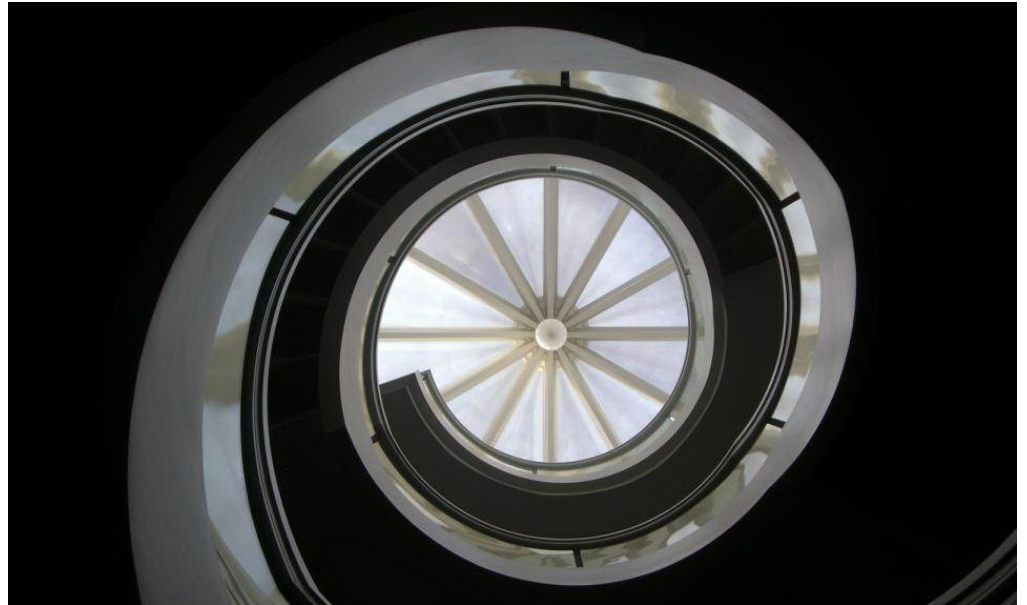




WJE DETROIT

Solutions for the Built World



Founded more than half a century ago, Wiss, Janney, Elstner Associates, Inc. (WJE), is an interdisciplinary engineering, architecture, and materials science firm specializing in delivering practical, innovative, and technically sound solutions across all areas of new and existing construction. WJE combines state-of-the-art laboratory and testing facilities, nationwide offices, and knowledge sharing systems to provide solutions for the built world.

OUR SERVICES

- Structural engineering
- Architecture and architectural engineering
- Materials science
- Testing
- Design
- Geotechnical and geological engineering
- Litigation consulting

OUR APPROACH

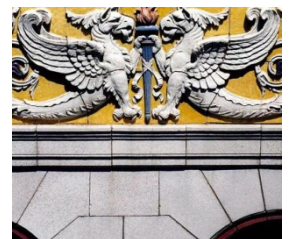
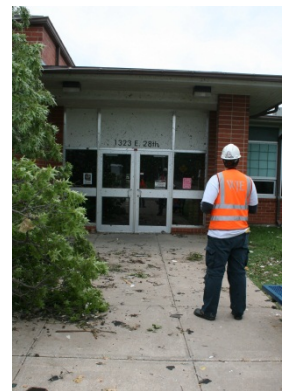
As materials, technologies, and structures change, our fundamental philosophy remains the same: developing better solutions based on an accurate diagnosis of each structure's unique problem.

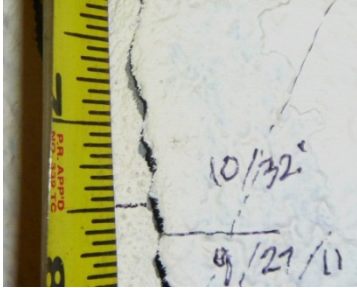
OUR PEOPLE

With fourteen employees in Detroit and more than 600 employees nationwide, WJE has the resources to respond to virtually any problem, with expertise in all aspects of construction technology. The firm's engineers, architects, and materials scientists are supported by technicians who are experts in testing and instrumentation. WJE's understanding of structural behavior and the performance of materials is enhanced by experience gained from more than 125,000 projects worldwide.

OUR RESOURCES

Our Janney Technical Center laboratory and testing facility is one of the nation's largest privately owned construction-based testing laboratories; it enables WJE to provide reliable answers to questions about construction systems, components, and materials. No firm is more qualified to break new ground in finding practical, innovative, and technically sound solutions.





DETROIT REPRESENTATIVE PROJECTS

- **Michigan State University Broad Art Museum**
Lansing, MI
Building Envelope Commissioning
- **McKay Tower**
Grand Rapids, MI
Historic Facade Assessment and Repair
- **University of Michigan AEC Building**
Ann Arbor, MI
Timber Truss Assessment and Repair
- **Joplin School District**
Joplin, MO
Structural and Building Envelope Damage Assessment from Tornado
- **Cadillac Place Building**
Detroit, MI
Ceiling Collapse Investigation
- **University of Michigan – Hill Auditorium**
Ann Arbor, MI
Terra Cotta Cornice Investigation
- **The Silverdome**
Pontiac, MI
Collapse Investigation
- **Michigan Hall of Justice**
Lansing, MI
Roofing Distress and Wall Flashing Investigation
- **411 W. Lafayette Parking Structure**
Detroit, MI
Maintenance and Structural Repair
- **Dearborn CSO 3**
Dearborn, MI
Structural Failure Investigation
- **Adrian College Football Stadium**
Adrian, MI
Water Infiltration and Project Consulting
- **150 W. Jefferson Facade**
Detroit, MI
Condition Survey and Coating Assessment

WJE DETROIT

Bingham Center
30700 Telegraph Road
Suite 3580
Bingham Farms, MI 48025
248.593.0900

