



## PROJECT PROFILE

# Fort Mason Building 201

Structural and Seismic Evaluation and Rehabilitation | San Francisco, CA



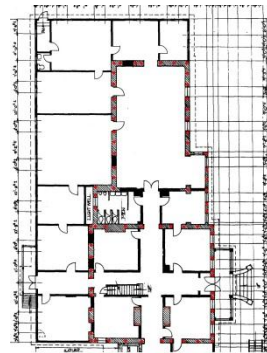
### CLIENT

National Park Service

### BACKGROUND

Building 201 at Fort Mason in San Francisco is the Park Headquarters for the Golden Gate National Recreational Area. Building 201 is a collection of structures built over the first half of the 20th century; the centerpiece is a three-story and one-story unreinforced brick masonry (URM) structure built in 1902, which is surrounded by several three-, two-, and one-story wood-framed structures built between 1918 and the 1940s.

The National Park Service (NPS) retained WJE to review and provide alternative mitigation concepts to rehabilitation approaches recommended by another consultant. The effort concentrated particularly on the URM structure since the NPS had found the mitigation approach that was initially recommended too disruptive and too architecturally intrusive.



### SOLUTION

WJE seismic engineers reviewed the assessment/rehabilitation report prepared by the previous consultant, along with the Historic Structure Report prepared by the NPS, before conducting a site visit to observe the condition and use of the building.

Based on the detailed assessment, WJE developed a number of alternative mitigation approaches that would enhance the seismic performance of the URM structure, including installation of steel braced and/or moment-frames, fiber wrapping, and strengthening using center coring. WJE recommended center coring as the preferred alternative as it posed the least impact on the use, configuration, and interior and exterior finishes of the structure, while being structurally and economically feasible.

