



FIRM OVERVIEW

Solutions for the Built World



Founded more than half a century ago, Wiss, Janney, Elstner Associates, Inc. (WJE), is an interdisciplinary engineering, architecture, and materials science firm specializing in delivering practical, innovative, and technically sound solutions across all areas of new and existing construction. WJE combines state-of-the-art laboratory and testing facilities, nationwide offices, and knowledge sharing systems to provide solutions for the built world.

OUR SERVICES

- Structural engineering
- Architecture and architectural engineering
- Materials science
- Testing
- Design
- Litigation consulting

OUR APPROACH

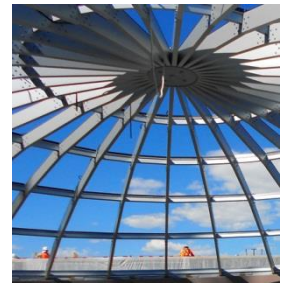
As materials, technologies, and structures change, our fundamental philosophy remains the same: developing better solutions based on an accurate diagnosis of each structure's unique problem.

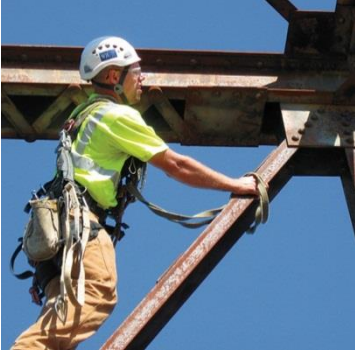
OUR PEOPLE

With more than 500 employees, WJE has the resources to respond to virtually any problem, with expertise in all aspects of construction technology. The firm's engineers, architects, and materials scientists are supported by technicians who are experts in testing and instrumentation. WJE's understanding of structural behavior and the performance of materials is enhanced by experience gained from more than 125,000 projects worldwide.

OUR RESOURCES

Our Janney Technical Center laboratory and testing facility is one of the nation's largest privately owned construction-based testing laboratories; it enables WJE to provide reliable answers to questions about construction systems, components, and materials. No firm is more qualified to break new ground in finding practical, innovative, and technically sound solutions.





REPRESENTATIVE PROJECTS

- **The Washington Monument**
Washington, D.C.
Earthquake Damage Assessment
- **I-35W Mississippi River Bridge**
Minneapolis, MN
Collapse Investigation
- **Central Artery/Tunnel (Big Dig)**
Boston, MA
Safety Audit
- **John F. Kennedy Center for the Performing Arts**
Washington, D.C.
Investigation and Rehabilitation
- **American Museum of Natural History**
New York, NY
Exterior Granite Facade Restoration
- **National September 11 Memorial**
New York, NY
Waterproofing Consulting
- **Art Institute of Chicago: Modern Wing and Nichols Bridgeway**
Chicago, IL
Structural Peer Review and Construction-Phase Services
- **Nebraska State Capitol**
Lincoln, NE
Exterior Facade Investigation and Restoration Design
- **Alcatraz Cellhouse**
San Francisco, CA
Seismic Upgrade
- **Holy Name Cathedral**
Chicago, IL
Fire Damage Assessment
- **Aloha Stadium**
Honolulu, HI
Condition Assessment and Repair Design
- **Los Angeles County Hall of Justice**
Los Angeles, CA
Exterior Envelope Consulting
- **Lyndon Baines Johnson Library**
Austin, TX
Plaza and Plinth Assessment and Restoration Design
- **Rainier Tower**
Seattle, WA
Exterior Condition Survey—Recladding Investigation and Design

Our Strategic Locations

