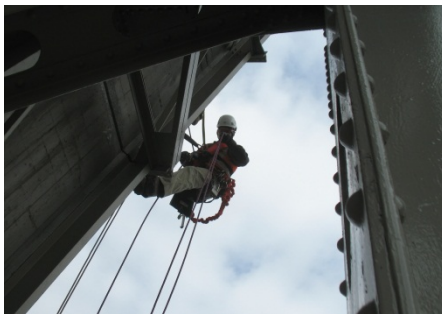




WJE SEATTLE

# Solutions for the Built World



Founded more than half a century ago, Wiss, Janney, Elstner Associates, Inc. (WJE), is an interdisciplinary engineering, architecture, and materials science firm specializing in delivering practical, innovative, and technically sound solutions across all areas of new and existing construction. WJE combines state-of-the-art laboratory and testing facilities, nationwide offices, and knowledge sharing systems to provide solutions for the built world.

## OUR SERVICES

- Structural engineering
- Architecture and architectural engineering
- Materials science
- Testing
- Design
- Geotechnical and geological engineering
- Litigation consulting

## OUR APPROACH

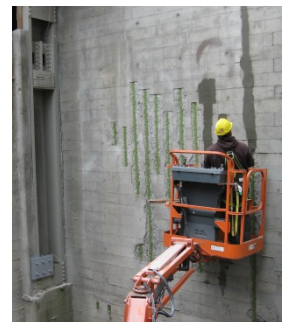
As materials, technologies, and structures change, our fundamental philosophy remains the same: developing better solutions based on an accurate diagnosis of each structure's unique problem.

## OUR PEOPLE

With twenty-five employees in Seattle and more than 600 employees nationwide, WJE has the resources to respond to virtually any problem, with expertise in all aspects of construction technology. The firm's engineers, architects, and materials scientists are supported by technicians who are experts in testing and instrumentation. WJE's understanding of structural behavior and the performance of materials is enhanced by experience gained from more than 125,000 projects worldwide.

## OUR RESOURCES

Our Janney Technical Center laboratory and testing facility is one of the nation's largest privately owned construction-based testing laboratories; it enables WJE to provide reliable answers to questions about construction systems, components, and materials. No firm is more qualified to break new ground in finding practical, innovative, and technically sound solutions.





## SEATTLE REPRESENTATIVE PROJECTS

- **Glenn Jackson Bridge**  
Vancouver, WA and Portland, OR  
Post-Tensioning Void Testing
- **Highway 520 Bridge Pontoons**  
Aberdeen, WA  
Concrete Spall Investigations
- **Westfield Southcenter Parking Garage**  
Tukwila, WA  
Coating Repairs
- **McGuire Building (Carpenter's Tower)**  
Seattle, WA  
Investigation of Damage Claims
- **Multiple Commercial Properties**  
Various Locations, WA and OR  
Fall Arrest Anchor Design and Testing
- **Safeco Field**  
Seattle, WA  
Design and Construction Administration
- **Hylebos Waterway Bridge**  
Tacoma, WA  
Condition Assessment, Load Rating Analysis, and Repair Design
- **Panattoni Warehouses**  
Throughout WA  
Roof Framing Inspections
- **I-84 Bridge**  
Nampa, ID  
Falsework Collapse Investigation
- **Savery Hall - University of Washington**  
Seattle, WA  
Consulting Design Work
- **Bellevue Crane Collapse**  
Bellevue, WA  
Failure Analysis and 3D Animation of Failure
- **520 Floating Bridge**  
Seattle, WA  
Critical Inspection

## WJE SEATTLE

960 South Harney Street  
Seattle, WA 98108  
206.622.1441

## PORTLAND ANNEX

6645 NE 78th Court, Suite C6  
Portland, OR 97218  
503.227.1277

