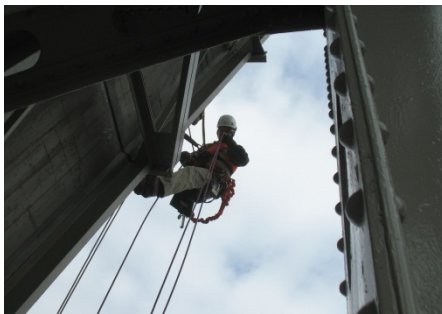




WJE PORTLAND

# Solutions for the Built World



Founded more than half a century ago, Wiss, Janney, Elstner Associates, Inc. (WJE), is an interdisciplinary engineering, architecture, and materials science firm specializing in delivering practical, innovative, and technically sound solutions across all areas of new and existing construction. WJE combines state-of-the-art laboratory and testing facilities, nationwide offices, and knowledge sharing systems to provide solutions for the built world.

## OUR SERVICES

- Structural engineering
- Architecture and architectural engineering
- Materials science
- Testing
- Design
- Geotechnical and geological engineering
- Litigation consulting

## OUR APPROACH

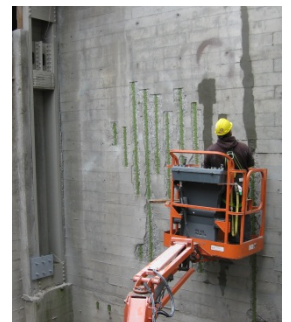
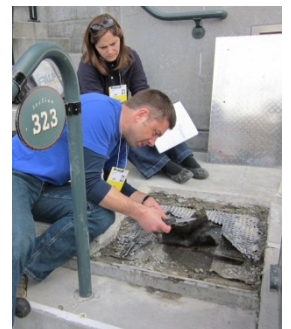
As materials, technologies, and structures change, our fundamental philosophy remains the same: developing better solutions based on an accurate diagnosis of each structure's unique problem.

## OUR PEOPLE

With three employees in Portland, twenty-five employees in Seattle, and more than 600 employees nationwide, WJE has the resources to respond to virtually any problem, with expertise in all aspects of construction technology. The firm's engineers, architects, and materials scientists are supported by technicians who are experts in testing and instrumentation. WJE's understanding of structural behavior and the performance of materials is enhanced by experience gained from more than 125,000 projects worldwide.

## OUR RESOURCES

Our Janney Technical Center laboratory and testing facility is one of the nation's largest privately owned construction-based testing laboratories; it enables WJE to provide reliable answers to questions about construction systems, components, and materials. No firm is more qualified to break new ground in finding practical, innovative, and technically sound solutions.





### PORTLAND REPRESENTATIVE PROJECTS

- **Glenn Jackson Bridge**  
Post-Tensioning Void Testing  
Vancouver, WA and Portland, OR
- **Multiple Commercial Properties**  
Fall Arrest Anchor Design and Testing  
Various Locations, WA and OR
- **Lakewood Lofts Condominiums**  
Litigation Support Services  
Lake Oswego, OR
- **The Mosaic Condominiums**  
Building Envelope and Moisture  
Intrusion Forensics  
Portland, OR
- **Morrison Bridge**  
Investigation of FRP Bridge Deck  
Panel Failure  
Portland, OR
- **Temco Kalama Upland Works**  
Investigation of Honeycombing in  
Slipform Construction  
Kalama, WA
- **I-205 Columbia River**  
Post-Tensioning Duct Inspection  
Portland, OR
- **Center Commons**  
Water Leakage Investigation  
Portland, OR
- **Shadow Hills Apartments**  
Building Envelope Investigation  
Corvallis, OR
- **Portland Community College,  
Sylvania Campus**  
Investigation of Structural Defects  
Portland OR
- **Zupan's Markets**  
Investigation of Structural Settlement  
Portland, OR
- **Driftwood Shores**  
Water Intrusion Rehabilitation and  
Code Review  
Florence, OR
- **Ashland High School**  
Grandstand Fire Investigation  
Ashland, OR

### WJE PORTLAND

6645 NE 78th Court, Suite C6  
Portland, OR 97218  
503.227.1277

