



WJE LOS ANGELES

# Solutions for the Built World



Founded in 1956, Wiss, Janney, Elstner Associates, Inc. (WJE), is an interdisciplinary engineering, architecture, and materials science firm specializing in delivering practical, innovative, and technically sound solutions across all areas of new and existing construction. WJE combines state-of-the-art laboratory and testing facilities, nationwide offices, and knowledge sharing systems to provide solutions for the built world.

## OUR SERVICES

- Engineering
- Architecture
- Laboratory
- Field
- Forensics
- Design

## OUR APPROACH

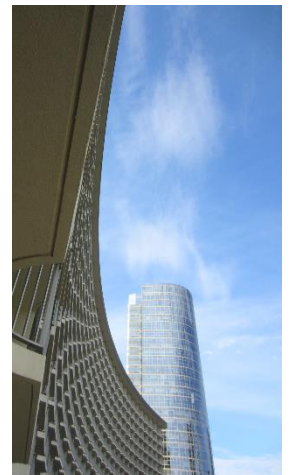
As materials, technologies, and structures change, our fundamental philosophy remains the same: developing better solutions based on an accurate diagnosis of each structure's unique problem.

## OUR PEOPLE

With more than a dozen employees in Los Angeles and more than 700 employees nationwide, WJE has the resources to respond to virtually any problem, with expertise in all aspects of construction technology. The firm's engineers, architects, and materials scientists are supported by technicians who are experts in testing and instrumentation. WJE's understanding of structural behavior and the performance of materials is enhanced by experience gained from more than 175,000 projects worldwide.

## OUR RESOURCES

Our Janney Technical Center laboratory and testing facility is one of the nation's largest privately owned construction-based testing laboratories; it enables WJE to provide reliable answers to questions about construction systems, components, and materials. No firm is more qualified to break new ground in finding practical, innovative, and technically sound solutions.





## LOS ANGELES REPRESENTATIVE PROJECTS

- **Beverly Wilshire Hotel**  
 Beverly Hills, CA  
 Concrete Facade Evaluation and Repair
- **Los Angeles County Hall of Justice**  
 Los Angeles, CA  
 Exterior Envelope Consulting and Terra Cotta Repair
- **Harbor UCLA Medical Center**  
 Torrance, CA  
 Building Envelope Commissioning
- **Angels Gate Lighthouse**  
 Los Angeles, CA  
 Structural Repair and Rehabilitation
- **Bollman House**  
 Los Angeles, CA  
 Historic Structure Report
- **University of California, San Diego Altman Clinical and Translation Research Institute Building**  
 San Diego, CA  
 Building Envelope Consulting
- **Salk Institute of Biological Studies**  
 La Jolla, CA  
 Teak Window Conservation and Concrete Repair
- **John Anson Ford Amphitheatre**  
 Los Angeles, CA  
 Historic Concrete Repair and Waterproofing Consulting
- **Port of Los Angeles**  
 Los Angeles, CA  
 Fire Damage Assessment
- **Sears Landmark Building**  
 Los Angeles, CA  
 Building Envelope Consulting
- **State Route 91/Interstate 710 Freeway**  
 Long Beach, CA  
 Fire Damage Assessment
- **Los Angeles County Metropolitan Transportation Authority (METRO)**  
 Los Angeles, CA  
 Construction Collapse Investigation

## WJE LOS ANGELES

225 South Lake Avenue  
 Suite 500  
 Pasadena, CA 91101  
 626.696.4650

